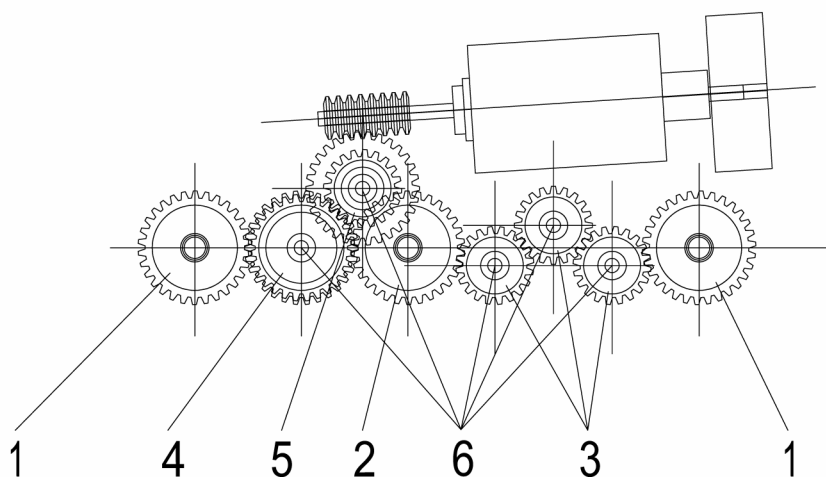


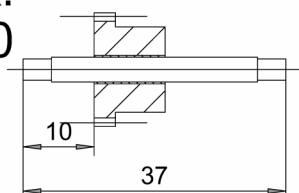
Selbst gebauter Antrieb für die Pola-Maxi V20

»Die einfache Lösung«

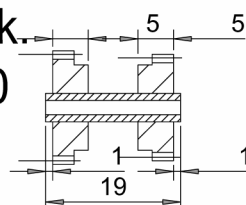
von Torsten Frieboese



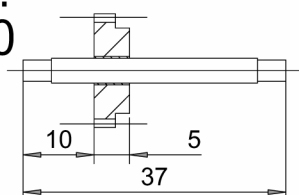
1 2Stk.
z=30



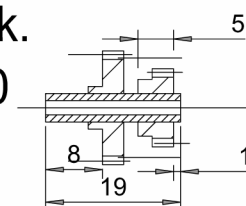
4 1Stk.
z=30



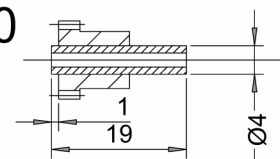
2 1Stk.
z=30



5 1Stk.
z=30



3 3Stk.
z=20



6 5Stk.

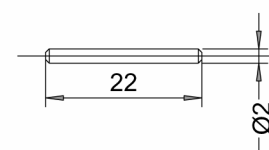


Bild 3. Abmessungen der einzelnen Zahnradwellen